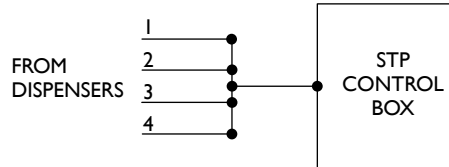


Dispenser Hook Isolation

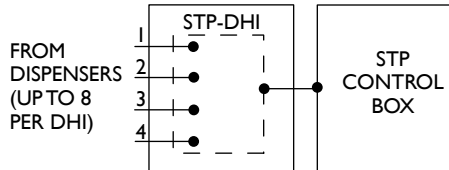
The FE Petro dispenser hook isolation device prevents electrical feedback between dispenser hook circuits as required by most electrical codes.



Conventional



STP-DHI



Advantages

- Optically isolates inputs from up to eight dispensers preventing damage to dispenser relay boards caused by cross-phasing.
- Prevents electrical feedback between dispenser hook circuits during periods of maintenance and service as required by NEC 514-6, 1999 and other international codes.
- Can be supplied factory-wired in tandem with the FE Petro Smart Controller or the FE Petro standard control box.
- Eliminates false STP run due to voltage leakage of multiple dispensers connected in parallel.
- Fuse-protected output to submersible pump controller.
- The STP-DHI can retrofit to any existing site.



Specifications:

- Enclosure size: 8-1/2" x 5" x 3" (215 mm x 127 mm x 76 mm).
- Eight optically isolated inputs from dispenser.
- One STP-DHI required per product grade for up to eight dispensers.
- STP-DHI: 120V 30VA input from supply, eight 120V 10mA inputs from dispensers.
- Output fuse rating: 250V 1A, fast-acting.
- 300 Volt surge protection.
- Maximum ambient temperature rating: 120 °F.
- LEDs indicate when source power is applied and dispenser hook signals are present.
- Compatible with any submersible pump controller.

Approvals

- Consult factory for applicable approvals.

Quality Certification

- Franklin Fueling Systems is an ISO 9001 Certified Manufacturer.

STP-DHI Dispenser Hook Isolation

Part Number	Description
402312921	STP-DHI-SCI combo DHI with factory-wired STP-SCI (when purchased with a 4" STP)*
402312921	STP-DHI-SCI, combo DHI with factory-wired STP-SCI (when purchased without a 4" STP)
402313921	STP-DHI-CBS, combo DHI with factory-wired STP-CBS single-phase control box
5800300100	STP-DHI, isolates up to eight, 120 Volt dispenser handles

Notes: 1. DHI models are compatible with FE Petro submersible pump controllers and competitive pump controller makes accepting 120 Volt dispenser hook signal.
 2. DHI models can be connected together for products with more than eight dispenser handle inputs.

*When purchasing STP-DHI-SCI in equal quantities of fixed speed 4" STPs, the STP-DHI-SCI will be invoiced at special discount pricing.



STP-DHI-SCI



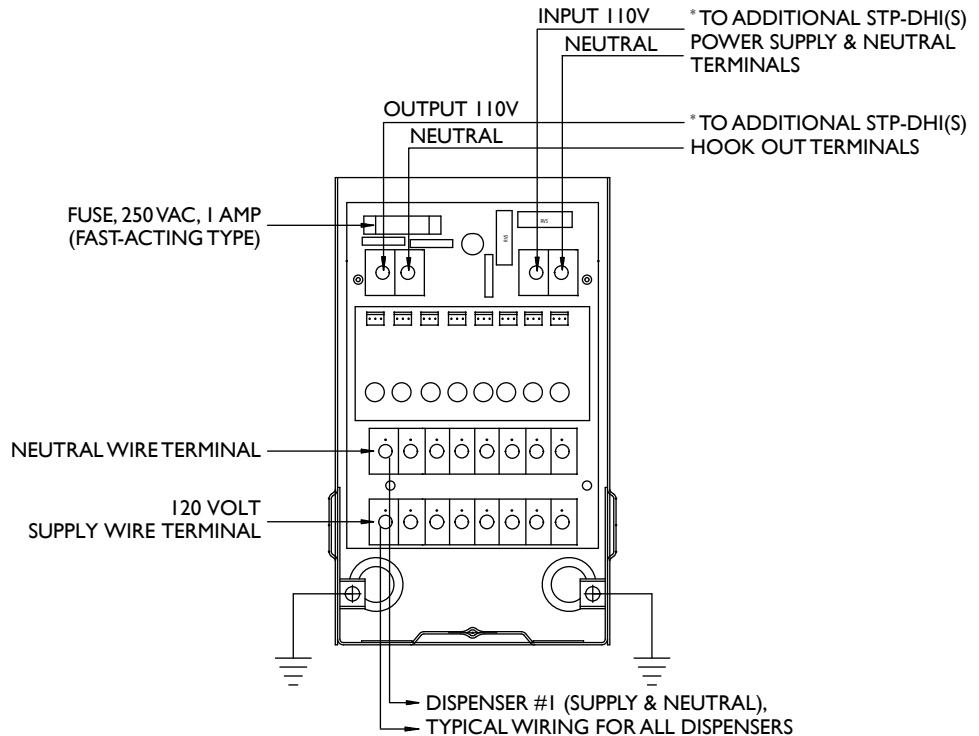
STP-DHI-CBS

Submersible Pumping Systems

DHI Repair Parts and Accessories

Part Number	Description
223243103	DHI fast-acting fuse, 250 VAC, 1 Amp
223885901	DHI circuit board, 120 Volt dispenser hook signal

DHI with 120 VAC Dispenser Hook Signal Wiring Diagram



*Wiring is polarity-sensitive when multiple units are connected together.