

Advantages

- Installs directly between the hose and nozzle.
- Multiple models and thread size options available.
- Compatible with high hose and retractor applications.
- Heat-treated aluminium construction and stainless steel options.
- Clearly marked flow direction for easy and proper installation.
- BAVs separate with axial or up to 30° angular force.
- Fuel release limited to less than 10 ml on BAV separation.
- Atmospheric inner seal protects from corrosion.
- No metal-on-metal internal connections.
- All rubber-to-machined metal connections ensure optimal sealing surfaces.
- Non-reusable design prevents unauthorised reconnection of breakaways by unqualified personnel or end user.

Approvals

- EN13617 (BAV standard EN13617-2, SG standard EN13617-1)

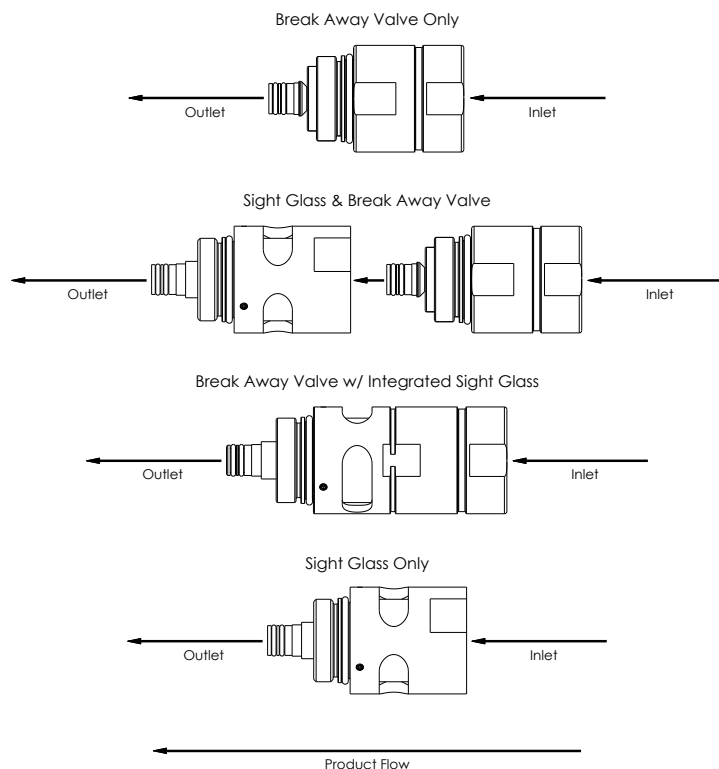
Omni Series™ Break Away Valves & Sight Glasses

Available in standard flow, vapour recovery and high flow model options, the Omni Series Break Away Valves (BAV) and Sight Glasses (SG) ensure proper drive-off protection, as well as visual fuel security. The lightweight, compact BAV and SG designs allow seamless installation directly between nozzle and hose. Additionally, several BAV models are available with integrated sight glass for a compact fit. A complete selection of threads sizes make it easy to find the perfect solution for any installation.



Installation

Omni Series BAVs and SGs are easily installed without specialised tools and are clearly labelled with proper flow direction. Simply mount the BAV and/or SG directly into the nozzle and tighten using a torque wrench to 30 Nm. (Repeat on hose side to complete.)



Break Away Valves & Sight Glasses

Standard Flow Break Away Valves and Sight Glasses

| Model | Description | Inlet Connection (Hose Side) | Outlet Connection (Nozzle Side) |
|--------|--|------------------------------|---------------------------------|
| 627971 | Break away valve with integrated swivel, aluminium | M34x1.5 female | M34x1.5 male |
| 628971 | Break away valve with integrated swivel, stainless steel | M34x1.5 female | M34x1.5 male |
| 627984 | Break away valve with integrated swivel, aluminium | 1" BSP female | M34x1.5 male |
| 628984 | Break away valve with integrated swivel, stainless steel | 1" BSP female | M34x1.5 male |
| 627985 | Break away valve with integrated swivel, aluminium | 1" BSP male | M34x1.5 male |
| 628985 | Break away valve with integrated swivel, stainless steel | 1" BSP male | M34x1.5 male |
| 627976 | Break away valve with integrated swivel and sight glass, aluminium | M34x1.5 female | M34x1.5 male |
| 627862 | Sight glass, aluminium | M34x1.5 female | M34x1.5 male |

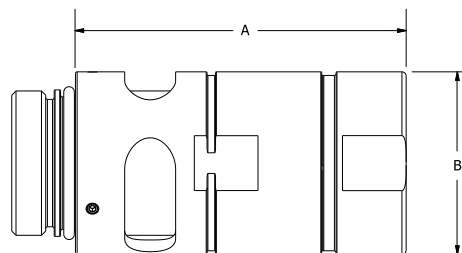
Specifications

- Nozzle flow rate compatibility: Up to 80 lpm
- Working pressures compatibility: 0.5 bar up to 3.5 bar
- Separation force: Between 800 N and 1,500 N force
- For use with motor fuels including: Petrol, petrol with up to 15% ethanol, diesel fuel
- Temperature rating: -20 °C to 40 °C
- Fuel release: < 10 ml after separation
- Internal pressure: BAV factory tested to 5.3 bar, SG factory tested to 3.5 bar
- Electric conductivity: Factory tested to < 100k Ohm



Standard Flow Break Away Valve and Sight Glass Dimensions

| Model | A (mm) | B (mm) |
|--------|--------|--------|
| 627971 | 45 | 43 |
| 628971 | 45 | 43 |
| 627984 | 45 | 43 |
| 628984 | 45 | 43 |
| 627985 | 45 | 43 |
| 628985 | 45 | 43 |
| 627976 | 78 | 44 |
| 627862 | 48 | 44 |



Break Away Valves & Sight Glasses

Vapour Recovery Break Away Valves and Sight Glasses

| Model | Description | Inlet Connection (Hose Side) | Outlet Connection (Nozzle Side) |
|--------|--|------------------------------|---------------------------------|
| 627980 | Vapour recovery break away valve with integrated swivel, aluminium | M34x1.5 female coaxial | M34x1.5 male coaxial |
| 628980 | Vapour recovery break away valve with integrated swivel, stainless steel | M34x1.5 female coaxial | M34x1.5 male coaxial |
| 627982 | Vapour recovery break away valve with integrated swivel and sight glass, aluminium | M34x1.5 female coaxial | M34x1.5 male coaxial |
| 627859 | Vapour recovery sight glass, aluminium | M34x1.5 female coaxial | M34x1.5 male coaxial |

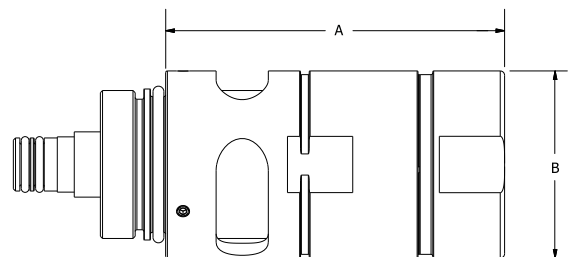
Specifications

- Nozzle flow rate compatibility: Up to 45 lpm
- Working pressures compatibility: 0.5 bar up to 3.5 bar
- Separation force: Between 800 N and 1,500 N force
- For use with motor fuels including: Petrol, petrol with up to 15% ethanol
- Temperature rating: -20 °C to 40 °C
- Fuel release: < 10 ml after separation
- Internal pressure: BAV factory tested to 5.3 bar, SG factory tested to 3.5 bar
- Electric conductivity: Factory tested to < 100k Ohm



Vapour Recovery Break Away Valve and Sight Glass Dimensions

| Model | A (mm) | B (mm) |
|--------|--------|--------|
| 627980 | 45 | 43 |
| 628980 | 45 | 43 |
| 627982 | 78 | 44 |
| 627859 | 48 | 44 |



Break Away Valves & Sight Glasses

High Flow Break Away Valves and Sight Glasses

| Model | Description | Inlet Connection (Hose Side) | Outlet Connection (Nozzle Side) |
|--------|---------------------------------------|------------------------------|---------------------------------|
| 627875 | High flow break away valve, aluminium | M42x1.5 female | M42x1.5 male |
| 627857 | High flow sight glass, aluminium | M42x1.5 female | M42x1.5 male |

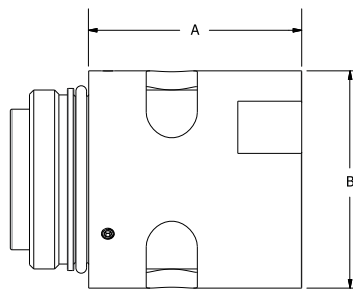
Specifications

- Nozzle flow rate compatibility: Up to 140 lpm
- Working pressures compatibility: 0.5 bar up to 3.5 bar
- Separation force: Between 1,000 N and 1,500 N force
- For use with motor fuels including: Petrol, petrol with up to 15% ethanol, diesel fuel
- Temperature rating: -20 °C to 40 °C
- Fuel release: < 25 ml after separation
- Internal pressure: BAV factory tested to 5.3 bar, SG factory tested to 3.5 bar
- Electric conductivity: Factory tested to < 100k Ohm



High Flow Break Away Valve and Sight Glass Dimensions

| Model | A (mm) | B (mm) |
|--------|--------|--------|
| 627875 | 50 | 51 |
| 627857 | 50 | 51 |



franklinfueling.com

3760 Marsh Rd. • Madison, WI 53718, USA

Tel: +1 608 838 8786 • Fax: +1 608 838 6433

US/Can: 1 800 225 9787 • Mex: 001 800 738 7610

UK: +44 (0)1473 243300 • FR: +33 (0) 1 69 21 41 41 • CN: +86 10 8565 4566

